



# Workflow Automation with a Compact Footprint



**Deliver rapid and consistent turnaround times, reduce manual steps and benefit from intelligent routing.**

When up to 75% of lab errors occur pre-analytically,<sup>1</sup> all laboratories could benefit from comprehensive workflow automation. While large volume laboratories have long had intelligent automation systems, small- to mid-sized labs have not. That is why we developed the DxA 5000 Fit, an automation solution capable of fitting labs of all sizes.

The DxA 5000 Fit drives speed and accuracy, all while maintaining a small footprint. It eliminates up to 80% of the manual steps associated with processing a patient sample, allowing you to keep your focus on what matters most: patient care.

## Endless Benefits

Intelligent automation previously exclusive to larger laboratories is now within your reach. The DxA 5000 Fit is designed for laboratories with space constraints, yet its scalable design allows it to easily expand to accommodate growing workloads.

The DxA 5000 Fit is an automation system comprising an integrated input/output module—which can be combined with centrifugation—connects to clinical chemistry, immunoassay and hematology instruments.

## Rapid and Consistent Turnaround Time

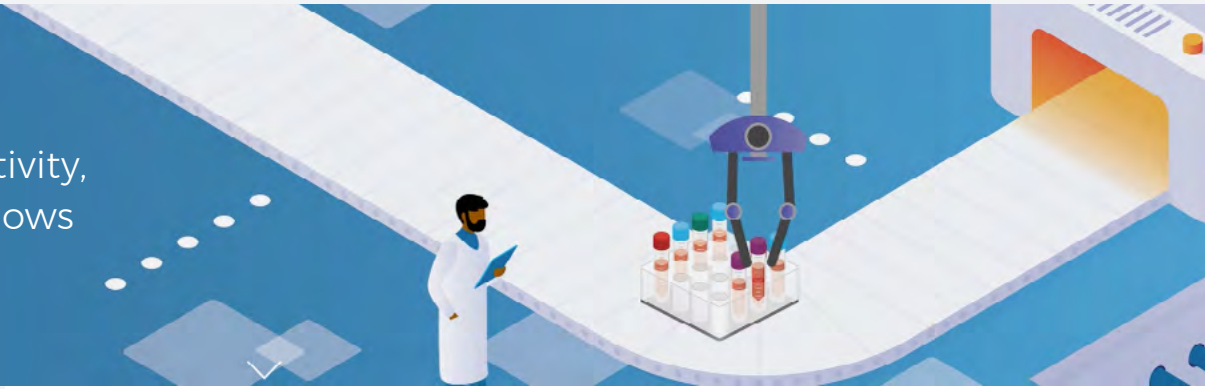
The DxA 5000 Fit automation system delivers a unique combination of rapid and consistent turnaround time along with the industry's most comprehensive pre-analytical sample quality assessment. It delivers significant efficiency gains by joining automated pre- and post-analytical sample processing with connected chemistry and immunoassay analyzers.



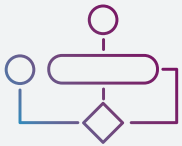
**Technologists are highly skilled and hard to find, yet analysis shows up to 70% of their time is spent doing routine pre- and post-analytical work.**

To help labs maximize the impact of their valuable staffs, the DxA 5000 Fit has been designed to automate the vast majority of manual steps that are performed before and after analysis. This streamlines diagnostic workflows and promotes a safe and engaging work environment.

Maximize Productivity,  
Streamline Workflows



## END-TO-END AUTOMATION



**End-to-end automation can fundamentally improve your workflow by:**

- › Freeing up valuable medical technologists' time
- › Improving the speed and consistency of turnaround time
- › Helping to identify errors earlier and reduce human errors
- › Optimizing laboratory operation with single point of entry for all specimens

## PRE-ANALYTICAL



**Sample quality detection** uses the industry's most comprehensive pre-analytical specimen check to inspect 9 sample parameters within 3 seconds of touching each tube



1. Read the barcode label
2. Measure sample tube size
3. Identify container type
4. Identify container cap type
5. Identify container cap color
6. Measure the fill level
7. Measure sample volume
8. Calculate sample weight
9. Conducts pre-spun status check<sup>3</sup>

**Universal centrifugation profile** can reduce centrifugation processing time<sup>4</sup>

**Single point of entry** supports various tubes types and sizes for batch loading with STAT samples having the highest priority

**Aliquoter** provides access to dual aliquoting system with liquid level detection to enable smart aliquoting<sup>5</sup>

## CONNECTION TO ANALYTICAL



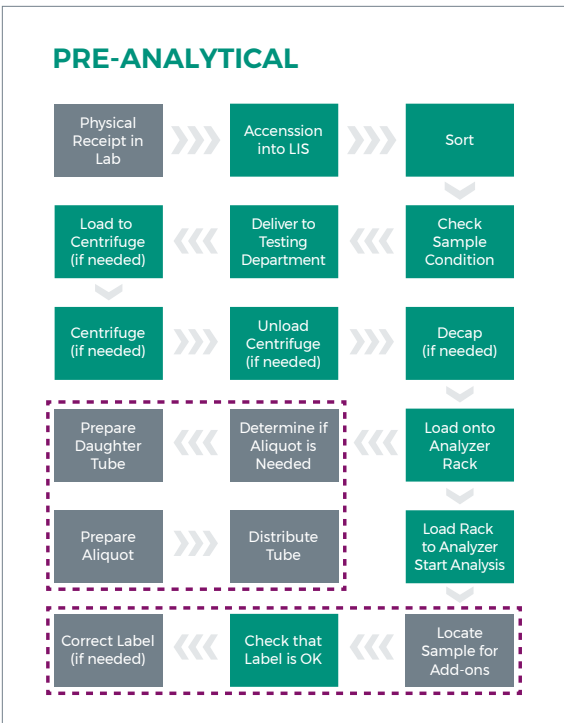
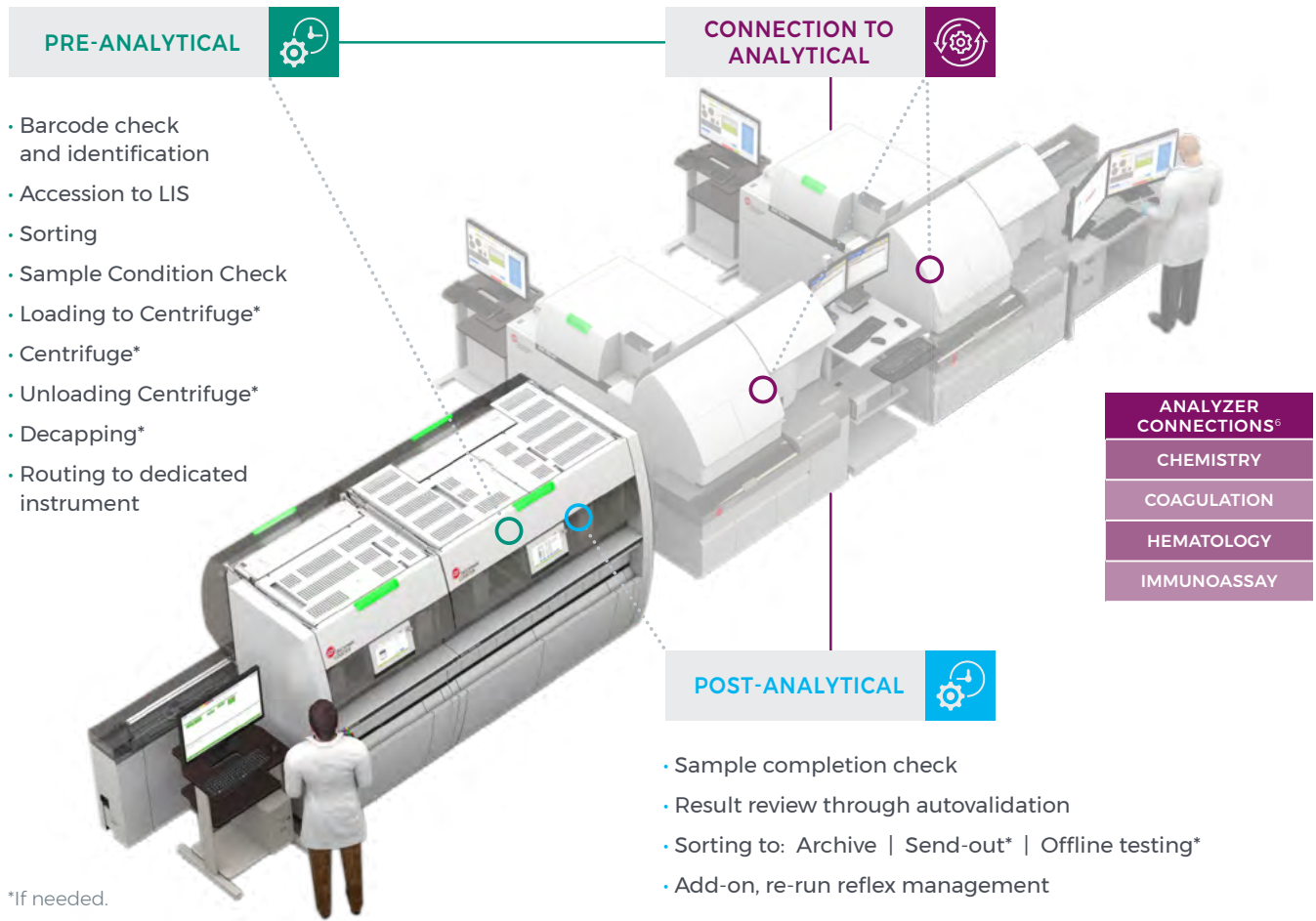
**End-to-end automation can fundamentally improve your workflow by:**

**Connect to** select immunoassay, chemistry and hematology analyzers

**Rack building unit** feeds high-throughput analyzers multiple tubes simultaneously to increase efficiency and avoid bottlenecks on the main automation line for hematology, coagulation and chemistry analyzers.

**Direct-track sampling** is designed to efficiently sample tubes while on the four lane track for processing on immunoassay and chemistry analyzers in addition to coagulation instruments

# Comprehensive Workflow Automation



The **DxA Family with DxA 5000 and DxA 5000 Fit** represents the culmination of years of customer-inspired design and rigorous reliability testing, and strengthens Beckman Coulter's ongoing commitment to providing solutions that deliver accurate results with fast, consistent turnaround times, better detection of pre-analytical errors, and more efficient workflows designed to fit the needs of any-sized laboratory.



### TRUST

Every moving part testing for 12 million cycles.

### INNOVATION

25+ patented innovations

## CONNECTIONS

### CHEMISTRY

Deliver a low total cost of ownership supported by proven uptime, scalability and use of fewer consumables.

### IMMUNOASSAY

Maximize workflow efficiency with fast throughput, best uptime and scalable solutions to meet unique laboratory requirements.

### HEMATOLOGY

Deliver faster, more accurate results (industry-leading 93% first-pass yield<sup>7</sup>), helping to achieve clinical effectiveness and operational efficiency in the laboratory.

### COAGULATION

Grow your test menu to meet physician needs with DxA's open connectivity.

### CLINICAL INFORMATICS

Empowers laboratories with intuitive tools to ensure fast results that support better patient care. Our solutions help laboratories to standardize processes across instruments, optimize workflows, provide analytic insights and streamline inventory management.

Visit us online for configurations, instrument connections and videos at [www.BeckmanCoulter.com/DxA5000Fit](http://www.BeckmanCoulter.com/DxA5000Fit)

1. Hammerling, J. A. (2012, February 1). Review of Medical Errors in Laboratory Diagnostics and Where We Are Today. Retrieved from <https://academic.oup.com/labmed/article/43/2/41/250500>
2. Based on Beckman Coulter analysis of typical clinical diagnostics laboratory workflow steps. Actuals step counts may vary by laboratory.
3. Pre-spun status check is available for Greiner Bio-One & BD tubes.
4. Protocol requires customer validation.
5. In development, the performance characteristics have not been established; not yet available for in vitro diagnostic use. For the latest characteristics visit the specifications tab at [BeckmanCoulter.com/DxA5000Fit](http://BeckmanCoulter.com/DxA5000Fit) or contact your sales representative.
6. Select third-party connections available. Please contact your sales representative to learn more.
7. Calculation of the number of samples per hour per square meter is based on U.S. dimensions; comparisons include two connected instruments plus one slide-maker/stainer from different manufacturers with side and rear clearance.

© 2022 Beckman Coulter, Inc. All rights reserved. Beckman Coulter, the stylized logo, and the Beckman Coulter product and service marks mentioned herein are trademarks or registered trademarks of Beckman Coulter, Inc. in the United States and other countries.

All trademarks are property of their respective owners.

For Beckman Coulter's worldwide office locations and phone numbers, please visit [www.beckmancoulter.com](http://www.beckmancoulter.com)

BR-353952 | 2022-10292

